



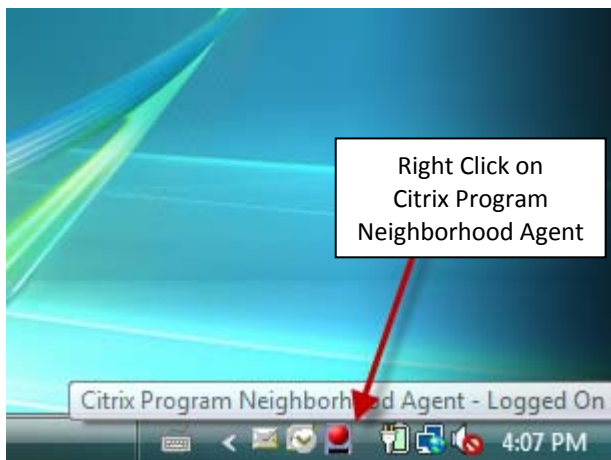
# Changing Your Northern College Network Security Settings

Once you have established your security settings for “off campus” use of Citrix, you can change these settings by taking the following steps:

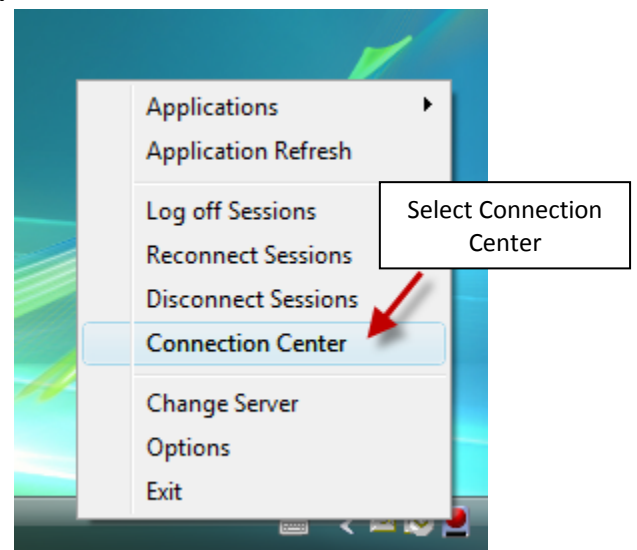
- Open the Citrix Program Neighborhood Agent as shown below
- Choose the Connection Center
- Click the File Security button to open the Client File Security Window
- In this window choose “Full Access” and “Never ask me again”
- Click on “OK” to complete the changes

**Note:** If your system is updated you will see the **Citrix XenApp** application Icon  throughout these screen shots instead of  shown here. The steps above will be the same.

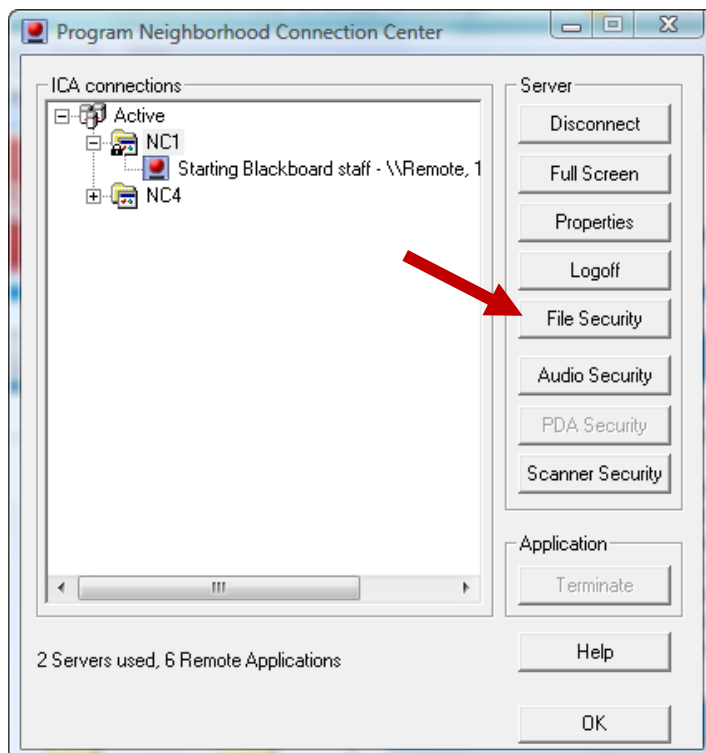
1.



2.



3.



4.

