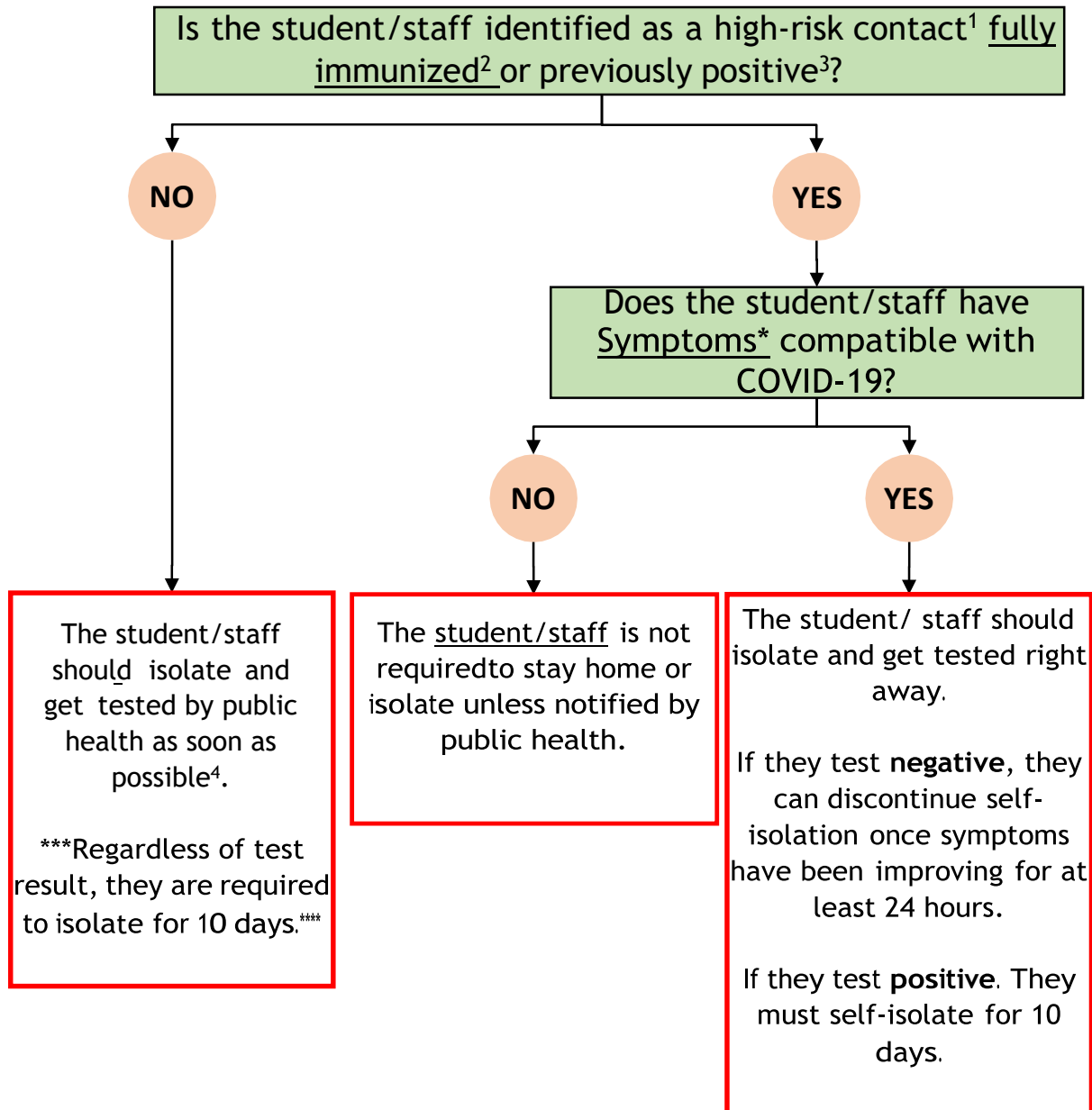


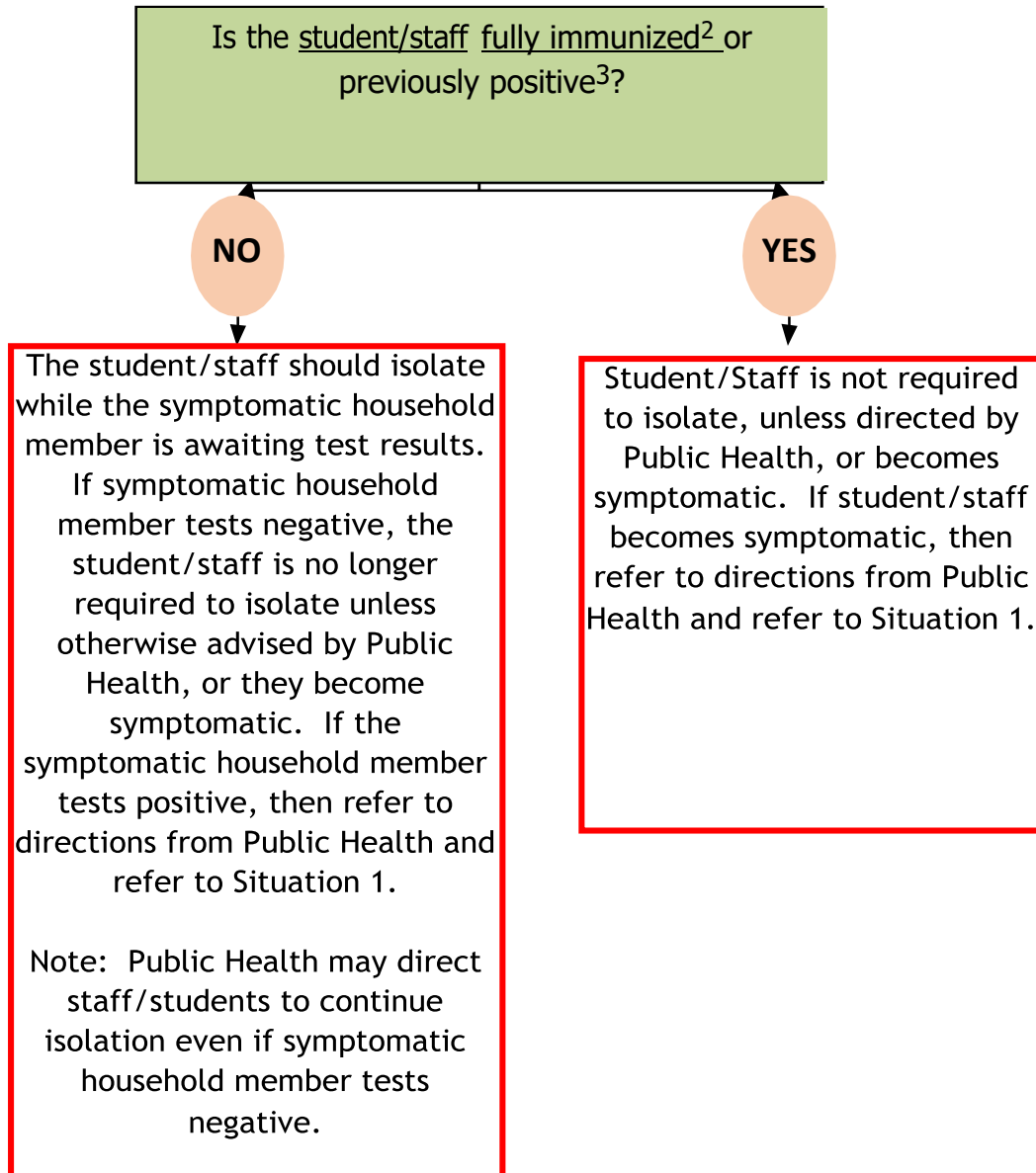
Northern College – COVID Pathways Guidance

Situation 1: Process for a student or staff that is symptomatic* and/ or has been identified as a High-Risk¹ Contact (the student/staff has been exposed to someone who has tested positive for COVID-19 or has been advised by Public health that they are a high-risk contact).



Northern College COVID Pathways Guidance

Situation 2: Process for Asymptomatic Student/Staff with a symptomatic* Household Member(s)



References and Terminology

¹ For the purposes of case/contact/outbreak management, an individual is defined as a high risk contact if they have been exposed to a person who tested positive for COVID, or otherwise identified by local health unit authorities.

² For the purposes of case/contact/outbreak management, an individual is defined as fully immunized ≥14 days after receiving their second dose of a two-dose COVID-19 vaccine series or their first dose of a one-dose COVID-19 vaccine series that is listed for emergency use by the World Health Organization or approved by Health Canada

- Individuals who are immunocompromised are excluded from this definition, in accordance with [COVID-19 Fully Immunized and Previously Positive Individuals: Case, Contact and Outbreak Management Interim Guidance](#).

³ For the purposes of case/contact/outbreak management, an individual is defined as previously positive if they were a confirmed case of COVID-19 where their initial positive result was ≤ 90 days ago AND they have been cleared from their initial infection. Individuals who are immunocompromised are excluded from this definition, in accordance with [COVID-19 Fully Immunized and Previously Positive Individuals: Case, Contact and Outbreak Management Interim Guidance](#).

Self-isolation still may be required at the discretion of the local public health unit. Refer to the [COVID-19 Fully Immunized Individuals: Case, Contact and Outbreak Management Interim Guidance](#) for individuals with immunocompromised, and residents of high risk congregate living settings / inpatients.

*see ICent App for current list of symptoms

⁴ Refer to [Provincial Testing Guidance](#).

Key Contact Information

Porcupine Public Health Unit: 705-360-4819
1-800-461-1818

Timiskaming Public Health Unit: 705-647-4305